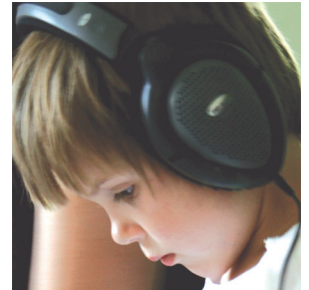


Philadelphia, Pennsylvania • June 25-26, 2010

Course Summary

Listening plays a vital role in the sensory integration process. In fact, some believe that the auditory system is the 'missing link' in sensory integration modalities. Both research* and clinical experience have shown that using sound-based interventions for clients with sensory processing difficulties can increase treatment effectiveness.

In this two-day workshop, you will learn to use Therapeutic Listening® Modulated CDs to create individualized, home-based programs for clients. You will also learn how to implement Therapeutic Listening strategies in conjunction with postural, respiratory, and sensory activities. The course will take you through all of the steps--from assessment to outcomes--for creating complete Therapeutic Listening programs. Video case presentations will be used to illustrate points and show changes in individuals with listening and other sensory processing difficulties.



This workshop will be especially meaningful for practitioners who have a background in sensory integration, including therapists in schools, hospitals, and private clinics. This course provides 12 contact hours or 1.2 AOTA CEUs, and provides participants with the necessary background information to begin using Therapeutic Listening right away. Specialized headphones and CDs are necessary and are available for purchase upon completing the course.

*Hall, L. & Case-Smith, J. (2007). The effect of sound-based intervention on children with sensory processing disorders and visual-motor delays. American Journal of Occupational Therapy, 61(2), 209-215.

Who Can Benefit From Therapeutic Listening?

Therapeutic Listening, coupled with sensory integrative treatment, tends to speed the emergence of:

- Attention
- Organized behavior
- Self regulation
- Postural control
- Bilateral coordination
- Praxis
- Fine motor control
- Oral motor/articulation
- Social skills/communication
- Visual motor integration

Course Objectives

Upon completion, participants will be able to:

- Describe the relationship between listening and sensory integration.
- Identify individuals with sensory processing and listening difficulties who may respond well to Therapeutic Listening.
- Create Therapeutic Listening programs that are adapted to meet specific needs of individual clients.
- Demonstrate understanding of the role of postural, respiratory, and sensory strategies that are part of the Therapeutic Listening program.

"The results you said you were getting at the Listening With the Whole Body workshop seemed incredible, but I am getting close to 100% success rate with using this in speeding up goal attainment. And yes, it works for toilet training! I've been in practice since 1987, and this is just about the easiest to administer and most effective tool for sensory integration-based disorders I have used to date! Thank you for improving the lives of countless children and families!" --Margaret Fischer, OT

Instructor

Lindy Joffe, MS, OTR/L completed her occupational therapy degree at Columbia University in 1999. She has practiced continuously since that time in a variety of pediatric settings specializing in sensory integration. Lindy enjoys working with a range of ages, from early intervention to adolescents, up through the occasional adult. She has a particular interest in how the motor and sensory systems, particularly the visual-vestibular-auditory triad, interact with cognitive perceptual skills to propel an individual's problem solving abilities in both three-dimensional and two dimensional-space. Lindy has a private practice in the San Francisco Bay Area.



Vital Links
 continuing education
 for innovative practice

Therapeutic Listening®

Listening With the Whole Body

Philadelphia, Pennsylvania • June 25-26, 2010

Friday, June 25

- 8:15 Check-in begins
- 8:30 What is listening?
- 10:00 Break
- 10:15 What is Therapeutic Listening®?
- 11:00 Listening as a sensory integration process
- 12:00 Lunch (on your own) / Listening lab
- 1:15 Using sound as a tool
- 2:15 Understanding the elements of music as clinical tools
- 3:00 Break
- 3:15 CD descriptions & clinical use of Therapeutic Listening CDs
- 4:30 End

Saturday, June 26

- 8:30 Programming with Therapeutic Listening®
- 9:30 Anatomical structures and neurological considerations
- 10:30 Break
- 10:45 Anatomy and neurology (continued)
- 12:00 Lunch (on your own) / Listening lab
- 1:15 Core activation and development
- 2:00 Assessment tools
- 3:00 Break
- 3:15 Clinical case studies, problem solving, questions
- 4:30 End

Register Today!

- ONLINE at www.vitallinks.net
- PHONE 608-270-5424
- TOLL-FREE FAX 866-636-9720
- MAIL this form and payment to:
 Vital Links
 6613 Seybold Road, Ste E
 Madison, WI 53719

Registration Fee:

- Add \$15 processing fee for purchase order without payment
- \$435 early bird price if postmarked by May 26, 2010*
- \$460 regular price if postmarked May 27, 2010 or after*
- \$285 reduced price for repeat attendees

*For groups of 3 or more registering simultaneously, each participant may take additional discount of \$25.

Registration fee includes *Listening With the Whole Body: Clinical Concepts and Treatment Guidelines for Therapeutic Listening* (\$79 value).

Participant Name (to appear on certificate/CEU documentation)

Mailing Address

City State Zip Code Email Address

Home Phone # Work Phone # Fax #

Profession:

- Occupational Therapy Physical Therapy
- Speech/Language Other _____

How did you first hear about this workshop?

Payment Method:

- Check or Money Order payable to **Vital Links**, or
- VISA MasterCard Discover Amex

Credit Card Number Exp Date

Name on Card (Print)

Signature

Cancellation Policy

Cancellations must be in writing and received by Vital Links two weeks prior to course; refund will not be granted after that date. Refund will be issued after course date (minus \$50 processing fee). You may transfer full registration to another Vital Links course if you notify us two weeks in advance of workshop you are cancelling. Vital Links reserves the right to cancel any course with due cause and refund in full. Participants purchasing non-refundable airfare tickets are encouraged to inquire as to course availability before final purchase. Registrant bears sole responsibility for transportation to course. Weather or transportation difficulties are not the responsibility of Vital Links, and failure of a chosen means of transportation is not grounds for registration fee refund when course is held.



Therapeutic Listening®

Listening With the Whole Body

Philadelphia, Pennsylvania • June 25-26, 2010

Location and Accommodations

Embassy Suites Philadelphia - Airport
9000 Bartram Avenue
Philadelphia, Pennsylvania 19153
Phone: 215-365-4500

Overnight accommodations are available at a discounted rate of \$139 per night for a standard room if reservations are made by June 17, 2010. Call the hotel at 215-365-4500 if you would like to reserve a room, and indicate you are with the Vital Links group to obtain this discounted rate. Complementary parking.

