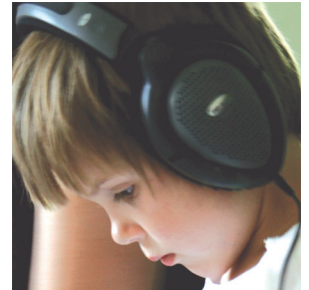


Chicago (Elk Grove Village), Illinois • April 30-May 1, 2010

Course Summary

Listening plays a vital role in the sensory integration process. In fact, some believe that the auditory system is the 'missing link' in sensory integration modalities. Both research* and clinical experience have shown that using sound-based interventions for clients with sensory processing difficulties can increase treatment effectiveness.

In this two-day workshop, you will learn to use Therapeutic Listening® Modulated CDs to create individualized, home-based programs for clients. You will also learn how to implement Therapeutic Listening strategies in conjunction with postural, respiratory, and sensory activities. The course will take you through all of the steps--from assessment to outcomes--for creating complete Therapeutic Listening programs. Video case presentations will be used to illustrate points and show changes in individuals with listening and other sensory processing difficulties.



This workshop will be especially meaningful for practitioners who have a background in sensory integration, including therapists in schools, hospitals, and private clinics. This course provides 12 contact hours or 1.2 AOTA CEUs, and provides participants with the necessary background information to begin using Therapeutic Listening right away. Specialized headphones and CDs are necessary and are available for purchase upon completing the course.

*Hall, L. & Case-Smith, J. (2007). The effect of sound-based intervention on children with sensory processing disorders and visual-motor delays. American Journal of Occupational Therapy, 61(2), 209-215.

Who Can Benefit From Therapeutic Listening?

Therapeutic Listening, coupled with sensory integrative treatment, tends to speed the emergence of:

- Attention
- Organized behavior
- Self regulation
- Postural control
- Bilateral coordination
- Praxis
- Fine motor control
- Oral motor/articulation
- Social skills/communication
- Visual motor integration

Course Objectives

Upon completion, participants will be able to:

- Describe the relationship between listening and sensory integration.
- Identify individuals with sensory processing and listening difficulties who may respond well to Therapeutic Listening.
- Create Therapeutic Listening programs that are adapted to meet specific needs of individual clients.
- Demonstrate understanding of the role of postural, respiratory, and sensory strategies that are part of the Therapeutic Listening program.

"The results you said you were getting at the Listening With the Whole Body workshop seemed incredible, but I am getting close to 100% success rate with using this in speeding up goal attainment. And yes, it works for toilet training! I've been in practice since 1987, and this is just about the easiest to administer and most effective tool for sensory integration-based disorders I have used to date! Thank you for improving the lives of countless children and families!" --Margaret Fischer, OT

Instructor

Sheila M. Frick, OTR, is an internationally esteemed clinician, lecturer, and pioneer in Occupational Therapy. She has over 20 years of clinical experience, having worked in psychiatry, rehabilitation, and home health before specializing in pediatrics. Her expertise includes sensory processing dysfunction, sensory integration, and auditory interventions. She created and continues to expand Therapeutic Listening, which she has taught to over 5,000 therapists worldwide. She also lectures on such topics as clinical neurology, respiration, the vestibular/auditory system, and various auditory interventions. She is the creator and author of *Listening With the Whole Body*, and co-author of *Core Concepts in Action*, *Astronaut Training*, and *Out of the Mouths of Babes*.



Vital Links
 continuing education
 for innovative practice

Therapeutic Listening®

Listening With the Whole Body

Chicago (Elk Grove Village), Illinois • April 30-May 1, 2010

Friday, April 30

- 8:00 Check-in begins
- 8:30 What is listening?
- 10:00 Break
- 10:15 What is Therapeutic Listening®?
- 11:00 Listening as a sensory integration process
- 12:00 Lunch (on your own) / Listening lab
- 1:15 Using sound as a tool
- 2:15 Understanding the elements of music as clinical tools
- 3:00 Break
- 3:15 CD descriptions & clinical use of Therapeutic Listening CDs
- 4:30 End

Saturday, May 1

- 8:30 Programming with Therapeutic Listening®
- 9:30 Anatomical structures and neurological considerations
- 10:30 Break
- 10:45 Anatomy and neurology (continued)
- 12:00 Lunch (on your own) / Listening lab
- 1:15 Core activation and development
- 2:00 Assessment tools
- 3:00 Break
- 3:15 Clinical case studies, problem solving, questions
- 4:30 End

Register Today!

-  ONLINE at www.vitallinks.net
-  PHONE 608.270.5424
-  TOLL-FREE FAX 866.636.9720
-  MAIL this form and payment to:
 Vital Links
 6613 Seybold Road, Ste E
 Madison, WI 53719

Registration Fee:

- Add \$15 processing fee for purchase order without payment
- \$435 early bird price if postmarked by March 31, 2010*
- \$460 regular price if postmarked April 1, 2010 or after*
- \$285 reduced price for repeat attendees

*For groups of 3 or more registering simultaneously, each participant may take additional discount of \$25.

Registration fee includes *Listening With the Whole Body: Clinical Concepts and Treatment Guidelines for Therapeutic Listening* (\$79 value).

Participant Name (to appear on certificate/CEU documentation)

Mailing Address

City State Zip Code Email Address

Home Phone # Work Phone # Fax #

Profession:

- Occupational Therapy Physical Therapy
- Speech/Language Other _____

How did you first hear about this workshop?

Payment Method:

- Check or Money Order payable to **Vital Links**, or
- VISA MasterCard Discover Amex

Credit Card Number Exp Date

Name on Card (Print)

Signature

Cancellation Policy

Cancellations must be in writing and received by Vital Links two weeks prior to course; refund will not be granted after that date. Refund will be issued after course date (minus \$50 processing fee). You may transfer full registration to another Vital Links course if you notify us two weeks in advance of workshop you are cancelling. Vital Links reserves the right to cancel any course with due cause and refund in full. Participants purchasing non-refundable airfare tickets are encouraged to inquire as to course availability before final purchase. Registrant bears sole responsibility for transportation to course. Weather or transportation difficulties are not the responsibility of Vital Links, and failure of a chosen means of transportation is not grounds for registration fee refund when course is held.



Therapeutic Listening[®]

Listening With the Whole Body

Chicago (Elk Grove Village), Illinois • April 30-May 1, 2010

Location & Accommodations

Sheraton Suites Chicago Elk Grove

121 Northwest Point Boulevard
Elk Grove Village, Illinois 60007
Phone: 847-290-1600

Overnight accommodations are available at a discounted rate of \$79 per night for a standard room if reservations are made by April 3, 2010. Call the hotel at 847-290-1600 if you would like to reserve a room, and indicate you are with the Vital Links group to obtain this room rate. Self-parking is available (complementary).

General Directions

From East

Take Interstate 90 West, via the Northwest Tollway. Exit onto Arlington Heights Road. Turn left on Arlington Heights Road. Make another left onto Northwest Point Boulevard. The hotel will be on the left side.

From North

Take Interstate 294 South to Interstate 90 West. Exit onto Arlington Heights Road. Turn left on Arlington Heights Road. Make another left onto Northwest Point Boulevard. The hotel will be on the left side.

From West

Take Interstate 90 West to Arlington Heights Road Exit. Turn right onto Arlington Heights Road. Take a left onto Northwest Point Boulevard. The hotel will be on the left side.

From South

Take Interstate 294 North to Interstate 90 West. Exit onto Arlington Heights Road. Turn left on Arlington Heights Road. Make another left onto Northwest Point Boulevard. The hotel will be on the left side.

